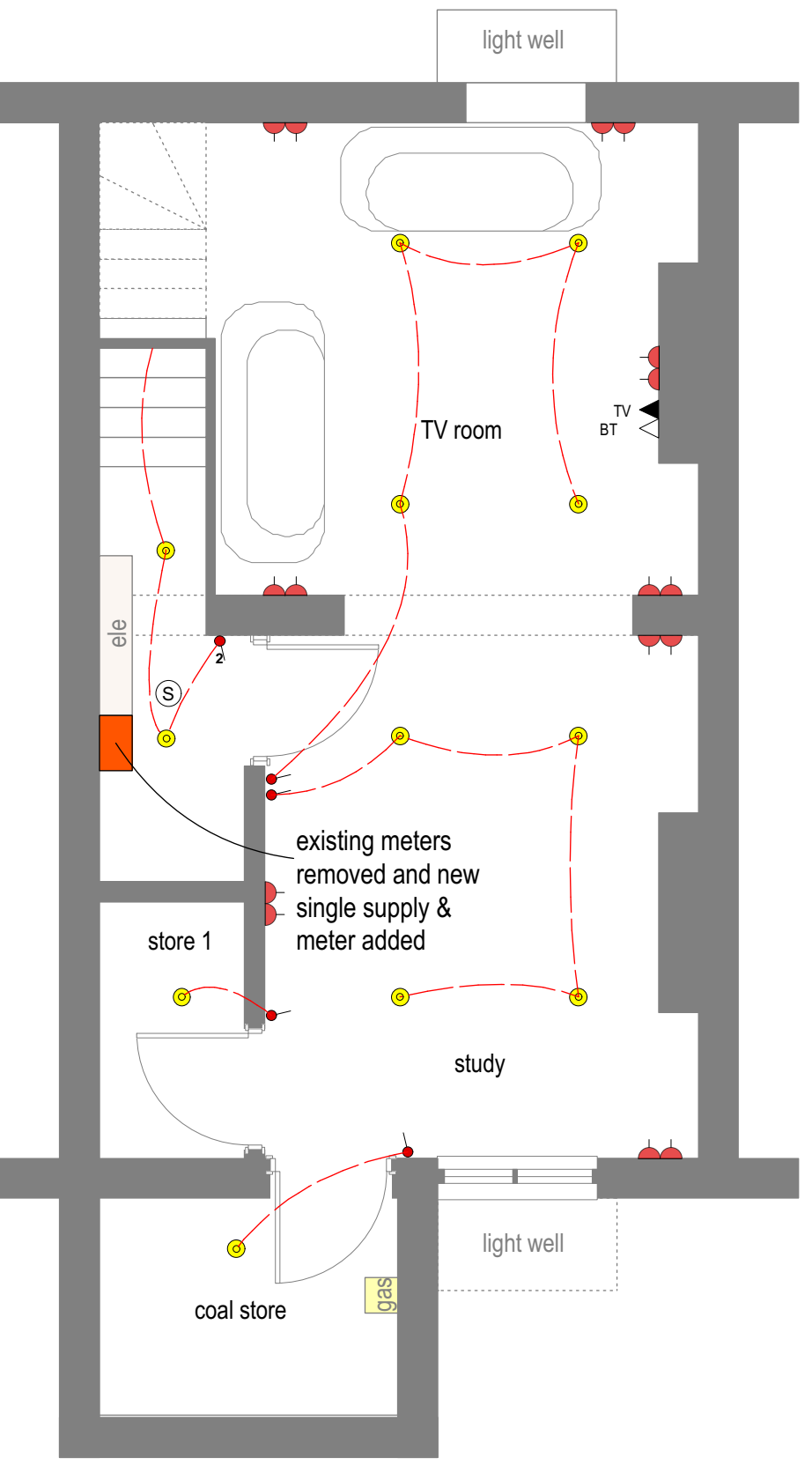
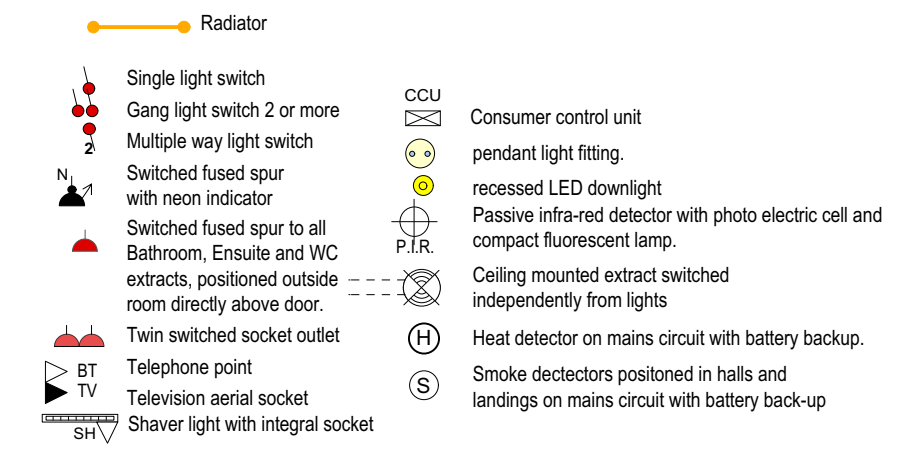


existing gas boiler and gas supply removed, shower added, WC replaced, cloakroom basin added.

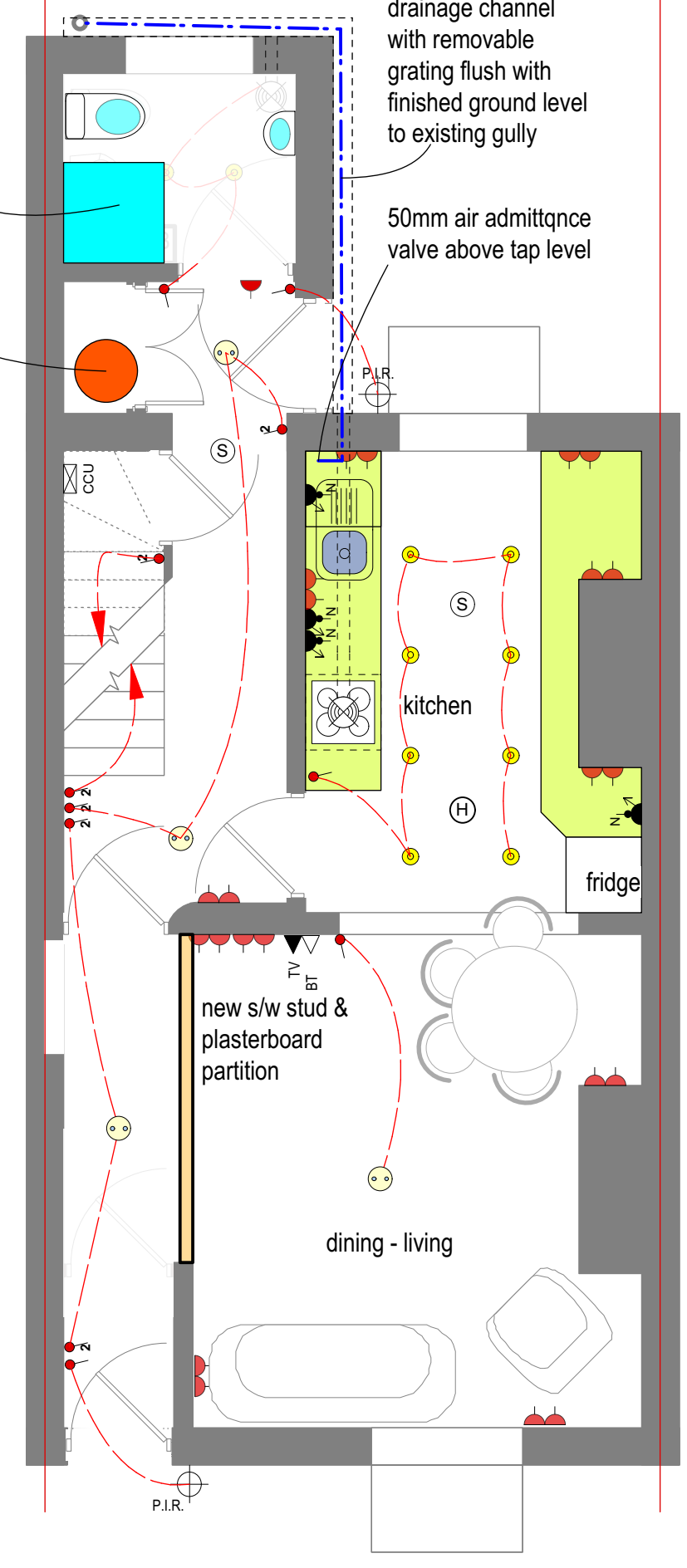
new electric boiler

drainage channel with removable grating flush with finished ground level to existing gully

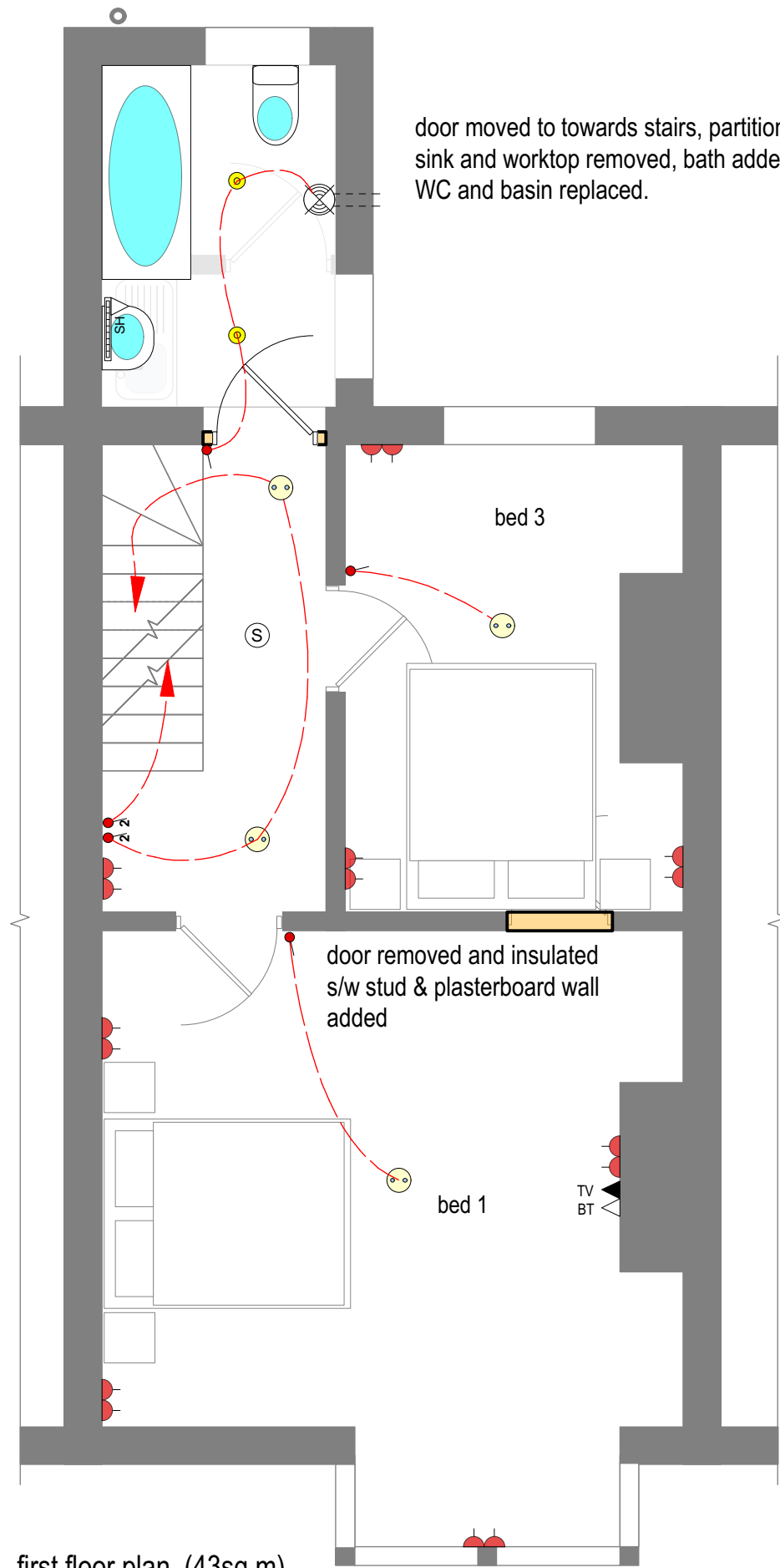
50mm air admittance valve above tap level



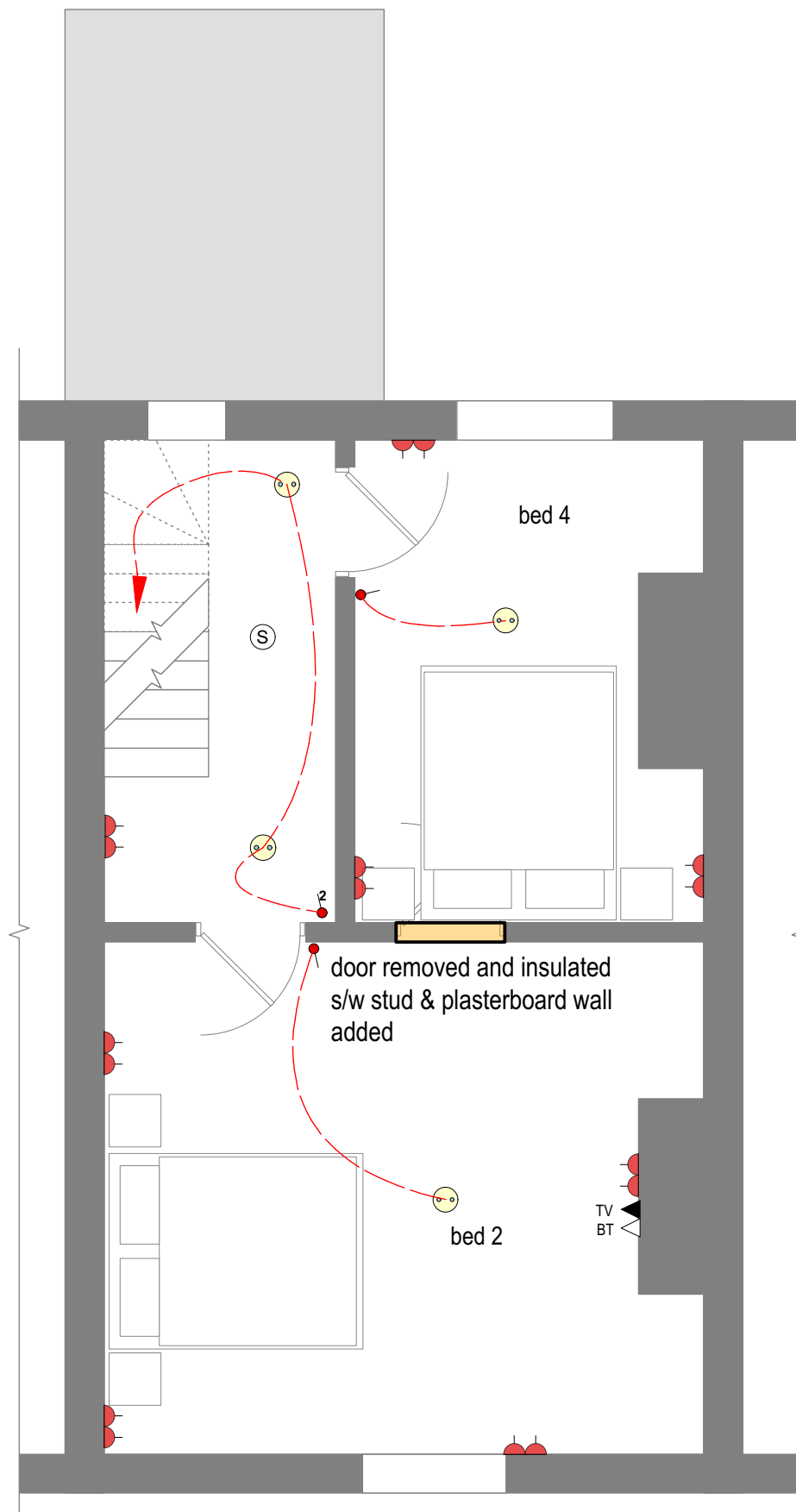
basement plan @ 1:50 (39sq.m)






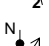



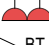

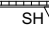




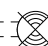
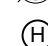
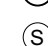

ground floor plan (41sq.m)



first floor plan (43sq.m)



second floor plan (35sq.m)

-  Radiator
-  Single light switch
-  Gang light switch 2 or more
-  Multiple way light switch
-  Switched fused spur with neon indicator
-  Switched fused spur to all Bathroom, Ensuite and WC extracts, positioned outside room directly above door.
-  Twin switched socket outlet
-  Telephone point
-  Television aerial socket
-  Shaver light with integral socket
-  CCU
-  pendant light fitting.
-  recessed LED downlight
-  Passive infra-red detector with photo electric cell and compact fluorescent lamp.
-  P.I.R.
-  Ceiling mounted extract switched independently from lights
-  Heat detector on mains circuit with battery backup.
-  Smoke detectors positioned in halls and landings on mains circuit with battery back-up lighting to fire escape route in accordance with BS5266-1 2005 (battery back up activated by circuit failure)